



Partners

Viewing Disability  
Through a New Lens

Julie Petty  
Melanie Thornton

 UNIVERSITY OF  
ARKANSAS | 

1

---

---

---

---

---

---

---

Housekeeping

- Captioning
- Questions
- Handouts
- Recording
- Evaluation and Certificates of Attendance

Partners

2

---

---

---

---

---

---

---

Introduction to Disability

What was your first  
introduction to disability?



3

---

---

---

---

---

---

---

## Pity and Charity

Disability:

An object of pity and charity



4

---

---

---

---

---

---

---

---

## Disability: A fate to be feared



5

---

---

---

---

---

---

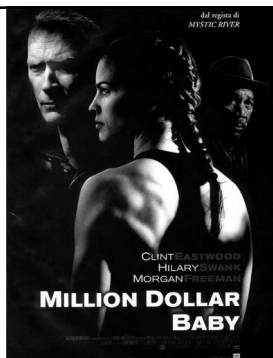
---

---

## Worse than Death

Disability:

A fate worse than death



6

---

---

---

---

---

---

---

---

**scary**

**Disability:**

**Something  
scary**




---

---

---

---

---

---

---

7

**Inspiration**

**Disability:**

**Inspirational**




---

---

---

---

---

---

---

8

**So much language!**

- |                 |                            |
|-----------------|----------------------------|
| • Retarded      | • Wheelchair bound         |
| • Deaf and dumb | • Confined to a wheelchair |
| • Deaf mute     | • Victim of                |
| • Invalid       | • Suffering from           |
| • Limited       | • Deformed                 |
| • Defects       |                            |

Partners

---

---

---

---

---

---

---

9

## Euphemism

**eu·phe·mism:** a mild or indirect word or expression substituted for one considered to be too harsh or blunt when referring to something unpleasant or embarrassing.

Partners

10

---

---

---

---

---

---

---

## Euphemisms

- disABILITY
- Handicapable
- Differently abled
- Physically challenged
- Special needs

Partners

11

---

---

---

---

---

---

---

**Why does this  
matter?**

Partners

12

---

---

---

---

---

---

---

**Disability:  
Excluded from the  
conversation**



13

---

---

---

---

---

---

---

---

**Portrayal of Disability:**

**Nondisabled  
people in roles  
playing people  
with  
disabilities**



14

---

---

---

---

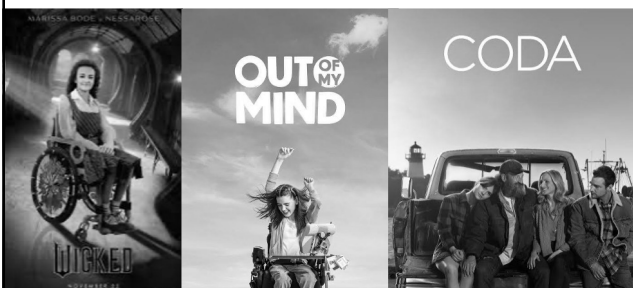
---

---

---

---

**The tide is turning...**



15

---

---

---

---

---

---

---

---

## Disability: Excluded by design



Inaccessible entrance



"Accessible" entrance

16

---

---

---

---

---

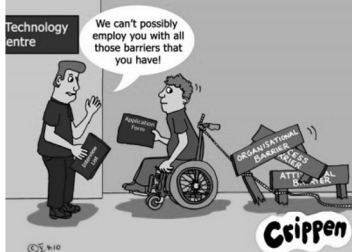
---

---

---

## Disability:

Seen as the problem and discriminated against



17

---

---

---

---

---

---

---

---

## Changing the Way We Think about Disability

- |   |  |
|---|--|
| <ul style="list-style-type: none"> <li>• From <i>MEDICAL MODEL</i></li> <li>• Disability is a deficiency or abnormality</li> <li>• Having a disability is negative</li> <li>• Disability resides in the individual</li> </ul> | <ul style="list-style-type: none"> <li>• To <i>SOCIAL MODEL</i></li> <li>• Disability is a difference</li> <li>• Having a disability, in itself, is neutral</li> <li>• Disability derives from interaction between individual and society</li> </ul> |
|---|--|

18

---

---

---

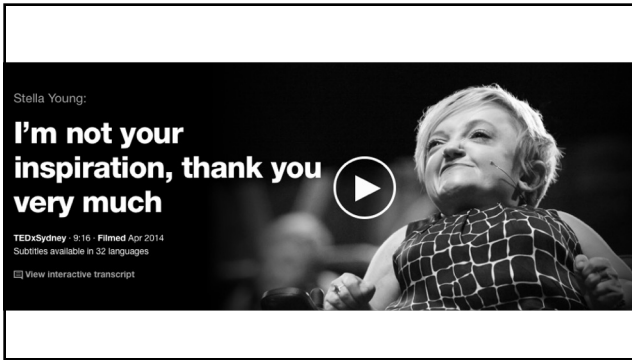
---

---

---

---

---



19

---

---

---

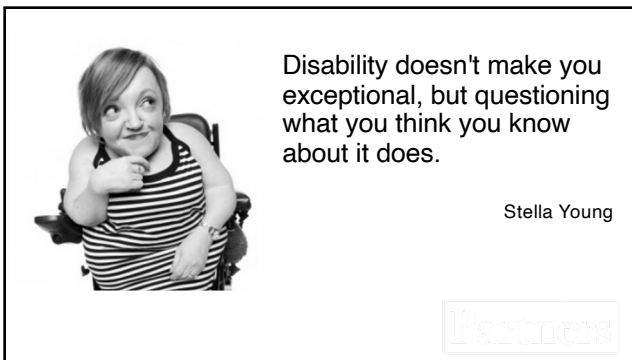
---

---

---

---

---



20

---

---

---

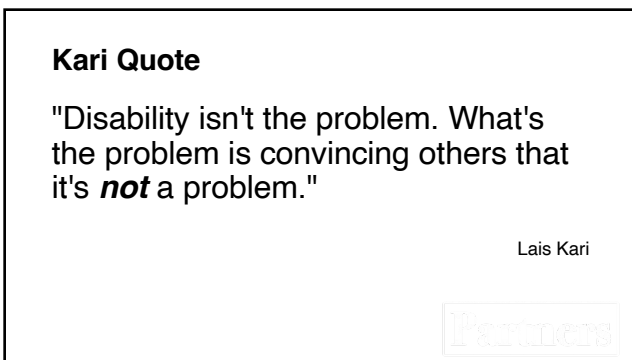
---

---

---

---

---



21

---

---

---

---

---

---

---

---

**Contact Us**

**Julie Petty**  
[japetty@uark.edu](mailto:japetty@uark.edu)

**Melanie Thornton**  
[mthornt@uark.edu](mailto:mthornt@uark.edu)



Partners

---

---

---

---

---

---

---