

Partners

Viewing Disability Through a New Lens

Julie Petty

Melanie Thornton



UNIVERSITY OF
ARKANSAS

College of Education
& Health Professions

Housekeeping

- Captioning
- Questions
- Handouts
- Recording
- Evaluation and Certificates of Attendance

Partners

What was your first introduction to disability?



Disability:

An object of pity and charity



59

WHAT DO YOU SAY TO A KID WHO CAN'T WALK?

For her, learning to walk is hard, hard work. Sometimes she cries.


Usually you can josh her along. But words don't always help. So you love her—until she gets her fight back. Then she's ready to try again.

Love is one of three things that help a crippled child walk. The other two are *skill* and *money*.

We've found people with love and skill to give, like the Easter Seal therapist in the picture.

We're looking to you for the money. Not a lot—just enough to put one kid one day closer to walking. That's about \$5.

The Easter Seals you use enable the Easter Seal Society, through its many clinics and centers, to help people fight against these crippling disorders—crippling accidents, poliomyelitis, cerebral palsy, multiple sclerosis, muscular dystrophy, arthritis, birth deformities, speech defects and many others.



"Fight with them—against crippling"
EASTER SEAL FUND APPEAL
ADDRESS: CRIPPLED CHILDREN, C/O YOUR LOCAL POSTMASTER

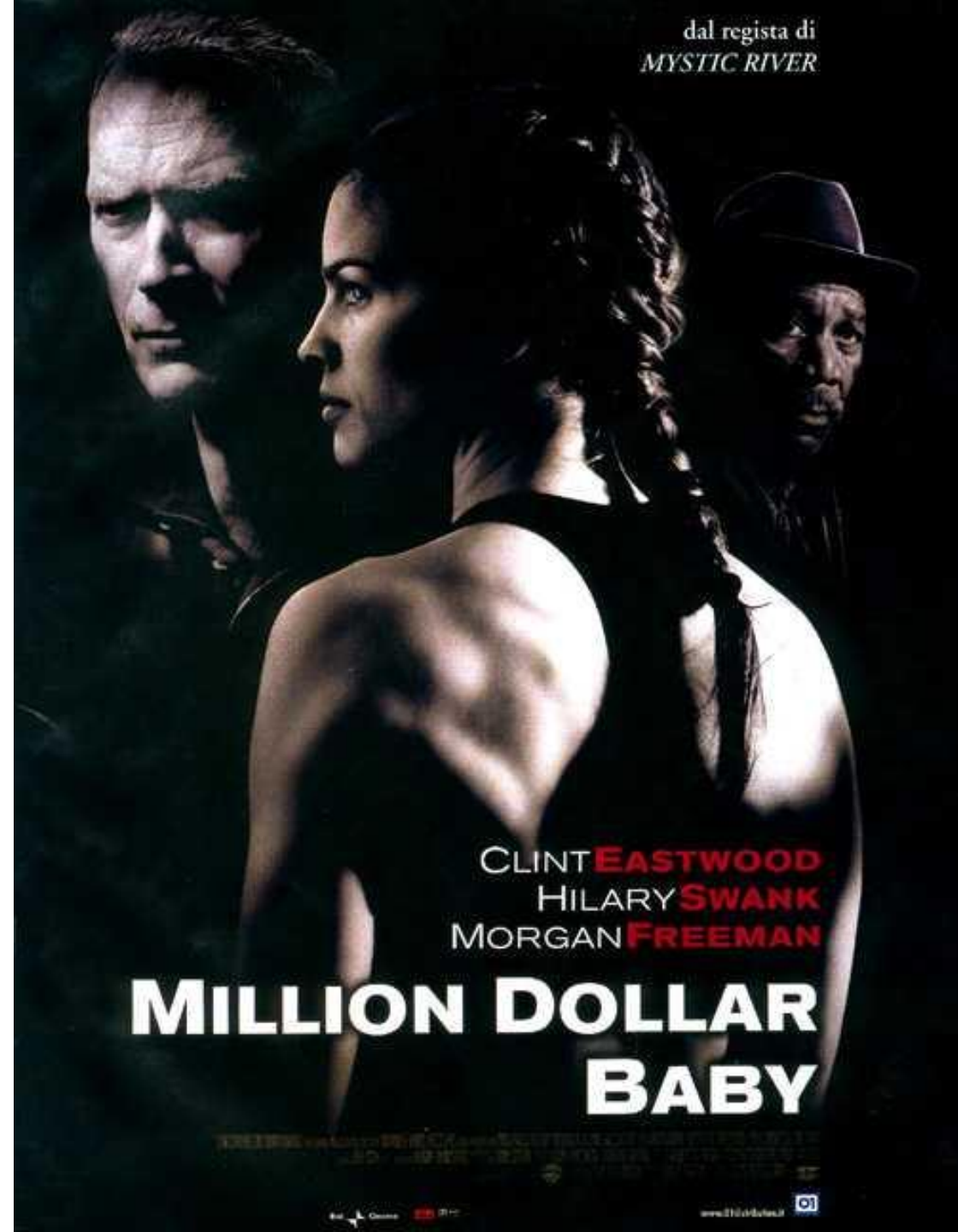
This advertisement is subject to the provisions in connection with the American Red Cross.

Disability: A fate to be feared



Disability:

**A fate worse
than death**



Disability:

**Something
scary**



Disability:
Inspirational



So much language!

- Retarded
- Deaf and dumb
- Deaf mute
- Invalid
- Limited
- Defects
- Wheelchair bound
- Confined to a wheelchair
- Victim of
- Suffering from
- Deformed

Partners

eu·phe·mism: a mild or indirect word or expression substituted for one considered to be too harsh or blunt when referring to something unpleasant or embarrassing.

Partners

Euphemisms

- disABILITY
- Handicapable
- Differently abled
- Physically challenged
- Special needs

Partners

**Why does this
matter?**

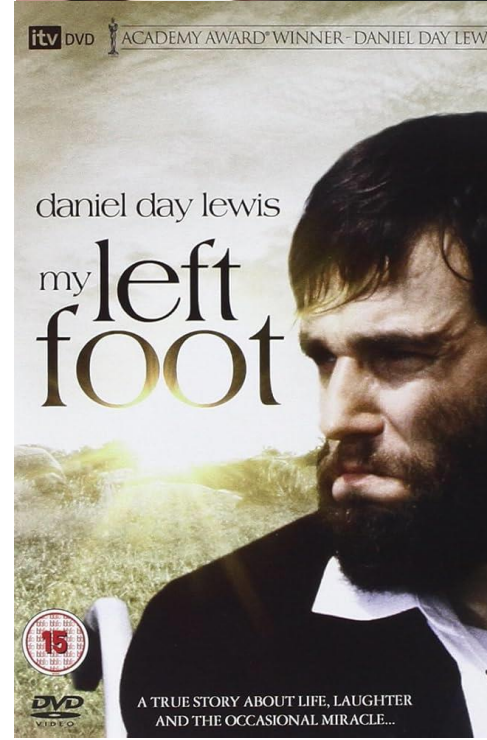
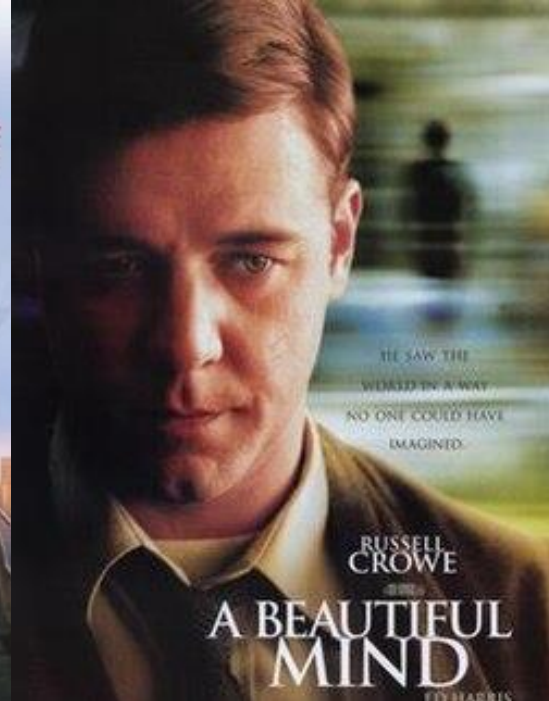
Partners

Disability: Excluded from the conversation



Disability:

Nondisabled people in roles playing people with disabilities



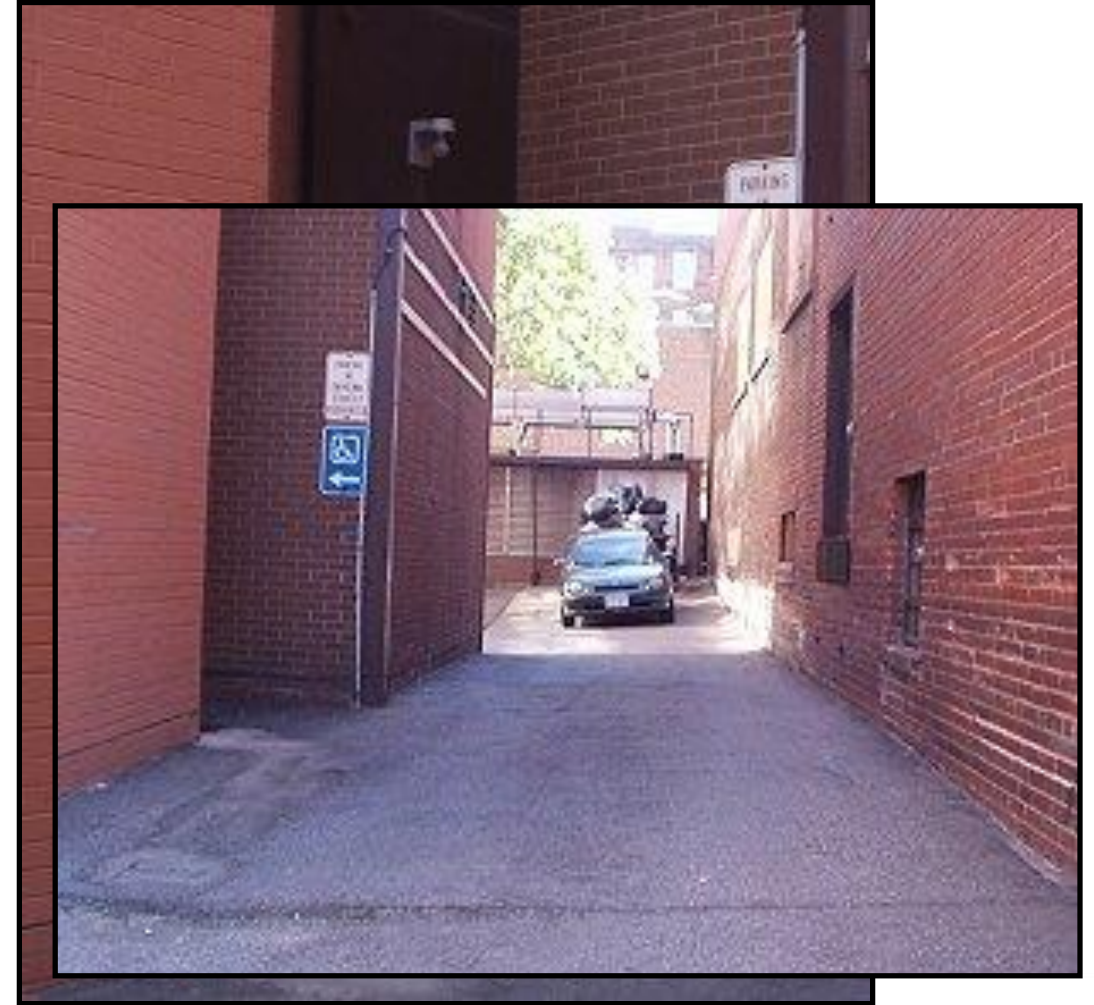
The tide is turning...



Disability: Excluded by design



Inaccessible entrance



“Accessible” entrance

Disability:

Seen as the problem and discriminated against



Changing the Way We Think about Disability

- *From MEDICAL MODEL*

- Disability is a deficiency or abnormality
- Having a disability is negative
- Disability resides in the individual

- *To SOCIAL MODEL*


- Disability is a difference
- Having a disability, in itself, is neutral
- Disability derives from interaction between individual and society

Stella Young:

I'm not your inspiration, thank you very much

TEDxSydney · 9:16 · Filmed Apr 2014

Subtitles available in 32 languages

 [View interactive transcript](#)





Disability doesn't make you exceptional, but questioning what you think you know about it does.

Stella Young

Partners

"Disability isn't the problem. What's the problem is convincing others that it's ***not*** a problem."

Lais Kari

Partners

Contact Us

Julie Petty

japetty@uark.edu

Melanie Thornton

mthornt@uark.edu



Partners